



blubell User Manual

Version 1.0



Table of Contents

1. Introduction.....	3
2. What blubell offers you	3
3. Technical prerequisites	4
4. Licenses.....	4
5. Download and Installation	5
6. Daily Use	7
7. blubell Dashboard: Contacts.....	8
8. blubell Dashboard: Options	10
9. blubell Dashboard: Help/FAQ	11

1. Introduction

Welcome to **blubell**, the intelligent software for your PC that allows you to control Skype from your *Bluetooth* headset with advanced voice dialling.

With **blubell**, you can untangle yourself from your wired headset when using Skype. Use your existing *Bluetooth* headset with your *Bluetooth* enabled PC as if it was a high-end mobile phone without the usual price tag for your calls; benefit from free Skype-to-Skype calls, Skype-in and attractively priced international calls from your sofa, kitchen – you decide.

2. What **blubell** offers you

The key features of **blubell** are summarised below and in more detail in the following chapters.

*With **blubell**, you can:*

- ***Initiate and accept calls away from your PC:*** Simply press the button on your *Bluetooth* headset - as you do for your mobile
- ***Make Skype calls through voice dialling:*** Speak the name of the Skype contact you wish to call in your *Bluetooth* headset and **blubell** will initiate the call for you; no need to touch your computer
- ***Identify who is calling you:*** The names of your Skype callers will be announced through your headset before you take the call so you can decide to accept or reject the call on the spot
- ***Use Skype as normal:*** You can still use the Skype dashboard to initiate or accept calls if you want to; **blubell** will route the call though to your *Bluetooth* headset
- ***Get intelligent Audio Management:*** **blubell** only puts audio through to *Bluetooth* when it is ready: Otherwise, it will use your Skype selected sound device – so you never miss a call
- ***Get intelligent headset search and connectivity:*** Identifies all *Bluetooth* headsets paired to your computer

3. Technical prerequisites

Your computer, *Bluetooth* software and hardware will all influence the performance of **blubell**, so for a good experience, we recommend the following minimum specification:

PC Hardware:

- PC with 1GHz or higher processor clock speed (Intel, AMD or compatible processors)
- 256MB of RAM
- 30MB of available hard-disk space
- Sound Card

Software:

- Windows XP or Windows 2000 (withSP4),
- Windows Media Player 9
- Microsoft .Net 1.1 and above (We strongly recommend using Microsoft .NET Framework 2.0 and above)
- Skype

Connectivity:

- Internet connection : Dial-up, 33.6 Kbps or broadband

Bluetooth:

- Widcomm compatible *Bluetooth* version1.2 or higher dongle or built-in *Bluetooth* hardware in PC
- *Bluetooth* version 1.2 or higher headset
- For optimal performance, check our list of recommended *Bluetooth* equipment
 - Headsets: http://www.myblubell.com/product_info.php?page=7-10
 - Dongles: http://www.myblubell.com/product_info.php?page=12-13 .

4. Licenses

The **blu license** lets you install **blubell** and try it out for 15 days or 50 calls for free, whichever comes first. The application will have full functionality for the duration of the trial.

The **Gold license** gives you unlimited use of **blubell** for one Skype user ID. The **blubell** Gold license is locked down to one Skype ID to prevent piracy. Separate gold licenses must be purchased if you want to use **blubell** with more than one Skype ID.

5. Download and Installation

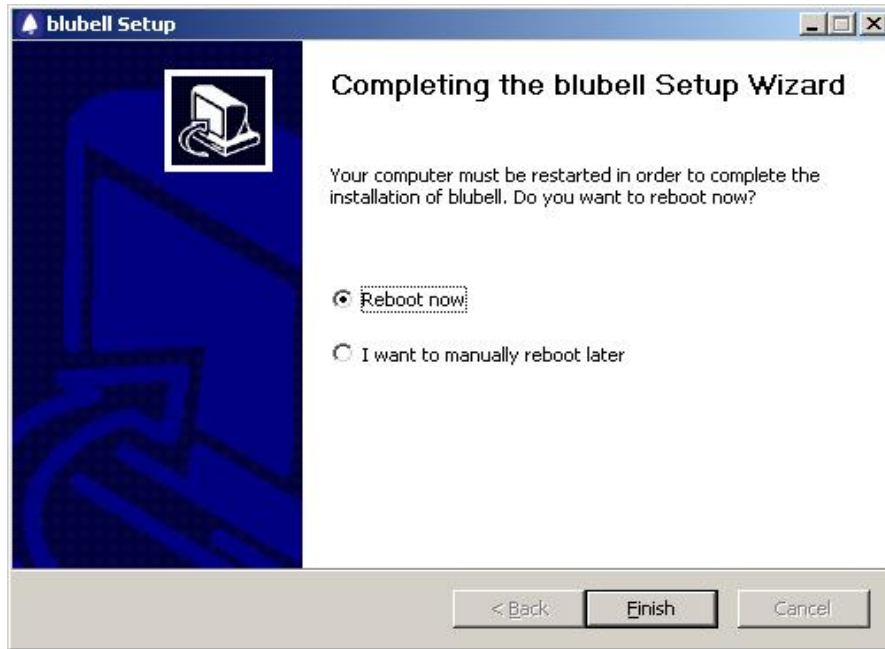
You can download **blubell** from www.myblubell.com.

After downloading the application, you are ready to install. After accepting the licence agreement, select your installation folder. The default location is 'C:\Program Files\blubell' but you can change this if you wish (see picture below)



blubell set-up wizard

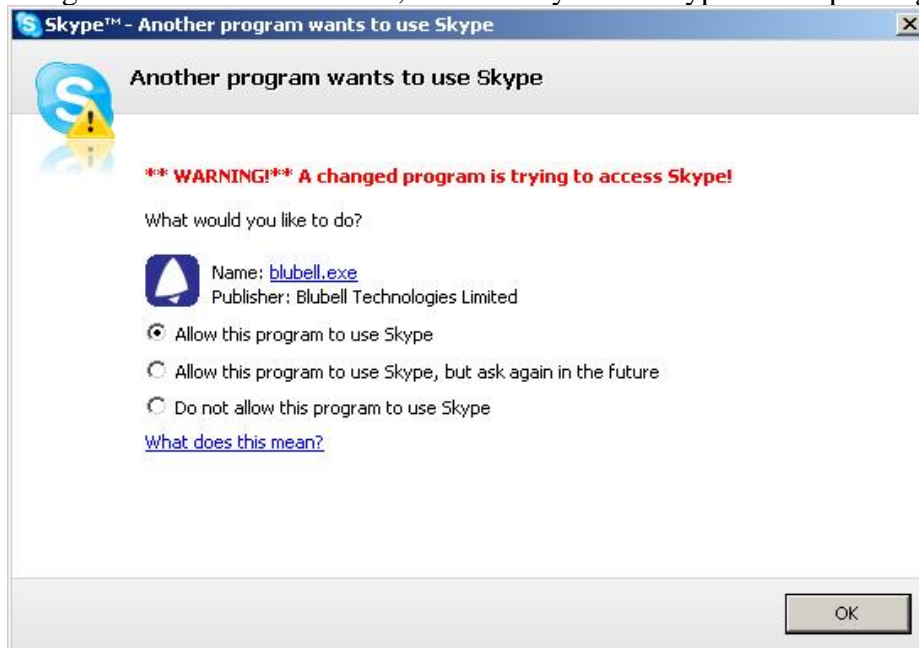
After completing the **blubell** setup wizard, you will be asked to reboot your computer to finalise the installation.



Rebooting computer after installation

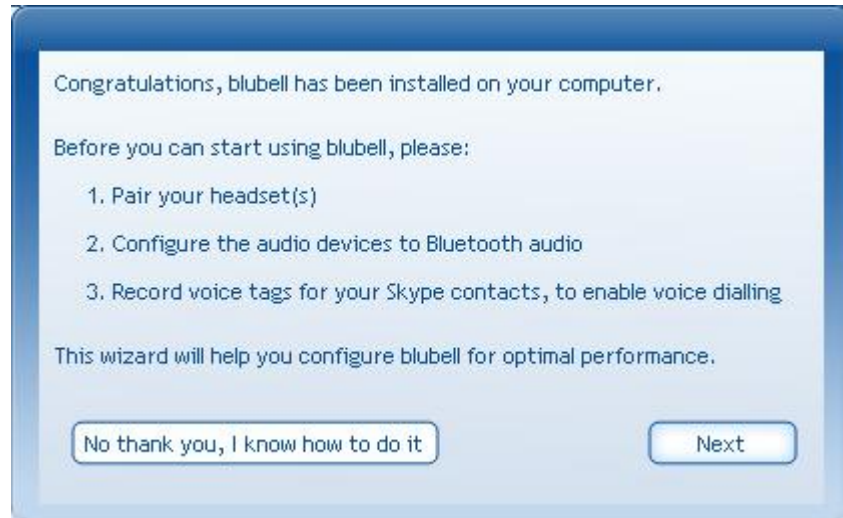
For **blubell** to function properly, you must ensure that *Bluetooth* is correctly installed on your computer. At the first installation an 'Initial *Bluetooth* configuration wizard' will be opened. After you have configured *Bluetooth* by double-clicking on the *Bluetooth* icon, **blubell** can be reopened and used.

When running **blubell** for the first time, make sure you set Skype to accept using **blubell**.



Setting Skype to accept blubell

After you first install **blubell** on your computer, a configuration wizard will guide you to get your application ready for use.



blubell configuration wizard

By pressing next you will be able to get assistance through the necessary configuration steps.

If for some reason you need to uninstall **blubell** at some stage, you can do so and retain your settings provided you DO NOT select the option to 'Remove all profile data'.

6. Daily Use

System Tray Icon

The system tray icon shows you the readiness of **blubell**; white means starting up, yellow means 'configuring, please wait', red means 'error, attention required' and green means 'ready'.



Starting up



Configuring, please wait



Error, attention required



Ready to use

Voice dialling

To make a call, you must ensure voice tags have been set for your contacts, as explained in detail in chapter 7. After that, simply press the *Bluetooth* headset button and speak the name of the person you wish to call. After you hear the “ping” sound, **blubell** will play back the selected voice tag before dialling. To end the call, press the headset button again.

Call Screening

For incoming calls from Skype or Skype-in contacts with voice tags defined, the voice tag will be played in the headset so you can identify who is calling you while away from the PC.

Off-Line Users

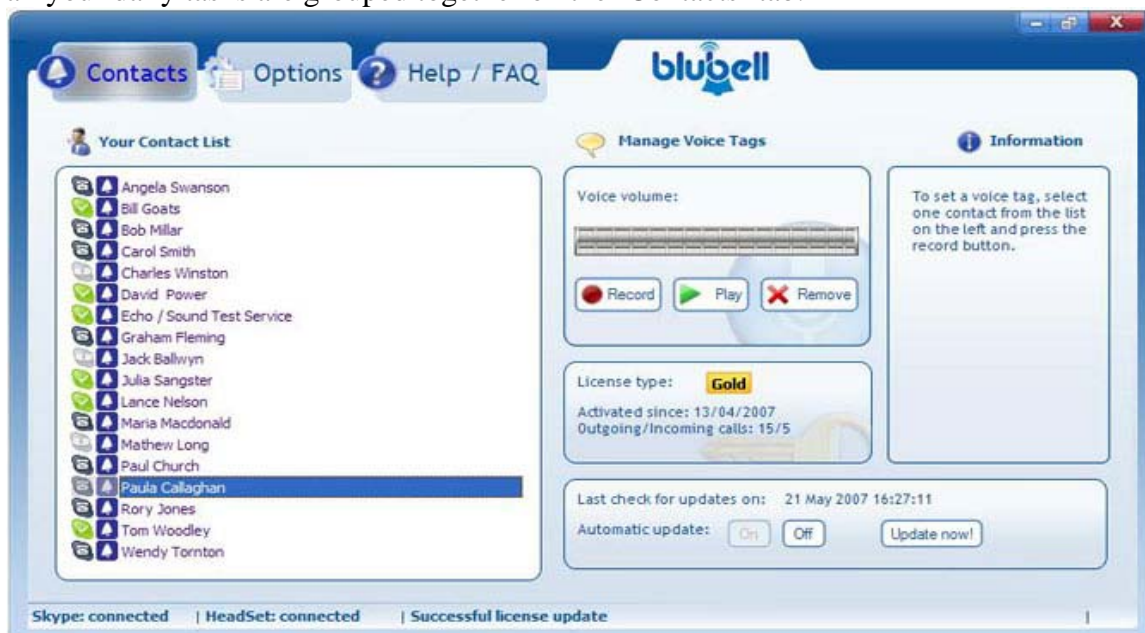
If an off-line user is called, the ‘Skype off-line status sound’ is played in the Bluetooth headset indicating the off-line status.

Dialling from Skype

The Skype dashboard can still be used in the usual way to accept incoming calls or make outgoing calls. The sound will go through the *Bluetooth* headset whenever connected. If you want to, calls initiated this way can be terminated by pressing the headset button. Please note you can still make conference calls by initiating them directly from the Skype user interface.

7. blubell Dashboard: Contacts

The use of **blubell’s dashboard** is very simple, user friendly and intuitive. Controls for all your daily tasks are grouped together on the ‘Contacts’ tab.



blubell dashboard / Contacts

‘Your Contact List’ provides the following information and functionality:

- Shows all your Skype contacts, including Skype-out contacts
- Status of your Skype contacts
- Shows if you have set a voice tag for your contacts
- Synchronizes with your Skype contact book real-time
- A double-click a contact will initiate a call immediately

‘Manage Voice Tags’ lets you set, change or delete voice tags for your Skype contacts.

To define a voice tag, select one of your contacts and press the ‘Record’ button. After you hear the “ping” sound in your headset, your computer is ready to record. The voice volume bar will indicate the strength of your voice as you record. After recording, we recommend you check the voice tag by pressing the ‘Play button’. The selected voice tag will be played back in your *Bluetooth* headset.

To change an existing voice tag, select the contact and press ‘Record’.

By following these guidelines you can maximise your success with the voice dialling feature:

- Speak only after the “ping” sound
- Speak clearly and naturally
- Avoid background noise
- Record voice tags with the same headset you intend to use when calling
- Avoid names and terms similar to other voice tags as this may reduce recognition rate
- Watch the voice tag strength indicator in the top right corner and make sure it moves to indicate the sound level
- Set the correct Bluetooth audio device under 'Application settings'

blubell updates

As **blubell** will continue to evolve over time, it has a built-in automatic update notification system.

You will find information relating to updates in the ‘Contacts’ tab of **blubell**

If you select ‘Automatic Update On’ you will be prompted to download these whenever available by pressing the ‘Update now’ button.

If the automatic update is off, the ‘Update now’ option will check for a new version only whenever you decide to.

NOTE: Your license status remains unaffected by **blubell** updates as status is linked to your Skype user ID.

8. blubell Dashboard: Options

The Options tab gives you two areas of control: User Preferences and Application Settings.



blubell dashboard / Options

‘**User preferences**’ lets you decide how to see your Skype contacts and manage application sounds. ‘Sort Contacts By’ *name* if you prefer to see your contacts in alphabetical order or *Skype status* to see them sorted by online/off-line status etc.

You can also ‘Disable **blubell** sound events’ at start-up and shut-down if you prefer.

‘**Application Settings**’ manages Bluetooth pairing, Audio device and start-up behaviour. Select between paired headsets in the ‘Headset’ drop-down menu. If no paired headsets are discovered, **blubell** will take you to your computer’s ‘Pairing wizard’ in order to pair a headset.

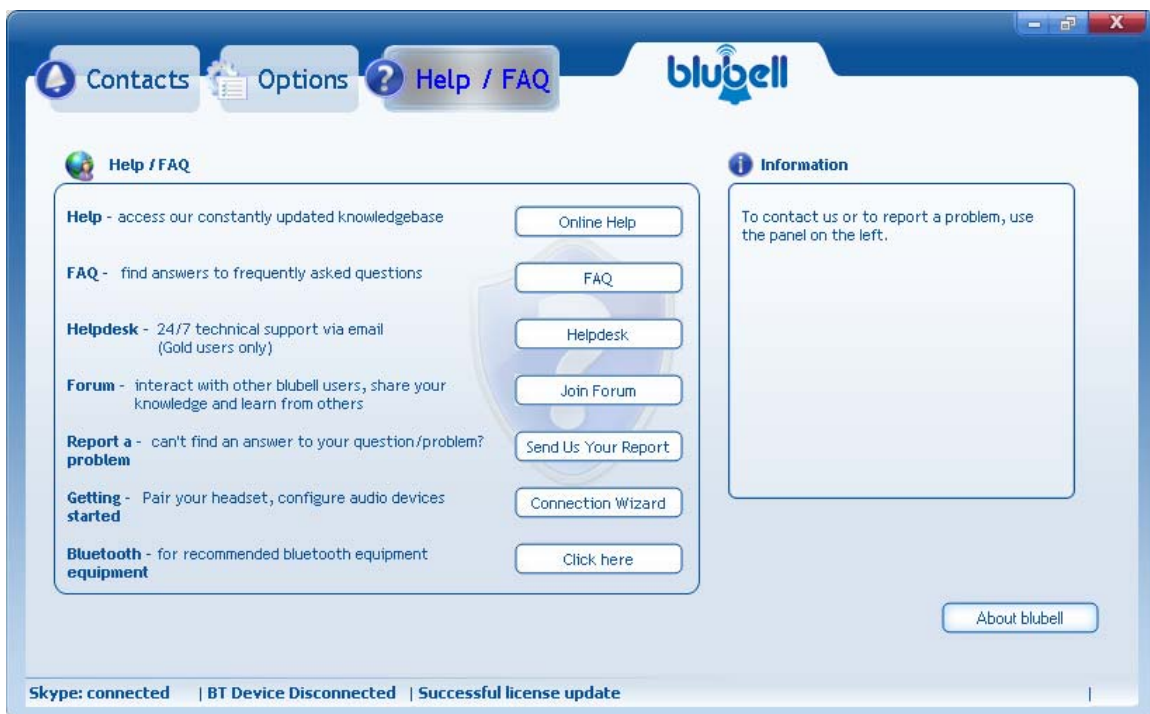
For successful pairing, your headset must be set in pairing mode as explained in your headset manual or on the manufacturer's website. From **blubell’s** ‘application settings’, select the pairing wizard, check ‘I want to find a specific *Bluetooth* device and configure ‘how this computer will use its devices’. Then press ‘Next’, select the new headset, press ‘Next’, enter PIN of your headset (typically 0000) and select ‘Initiate Pairing’ and select ‘Finish’.

Bluetooth audio device must be set to 'Bluetooth Audio' or equivalent. The specific name may vary by computer.

Note that the 'Apply Settings' button must be pressed to activate changes to 'Headset' or 'Bluetooth audio device'

'Start **blubell** when Windows starts' enables you to automatically start **blubell** at log-in by ticking the box.

9. **blubell** Dashboard: Help/FAQ



blubell dashboard / Help / FAQ

The 'Connection Wizard' button links to the Bluetooth pairing and configuration options.

The other Help/ FAQ links in this panel are your direct access to up-to-date information on the **blubell** website.

The **blubell** website offers you a special page dedicated to frequently asked questions. If you have a question, you can send it together with a brief description to **blubell**'s customer support team at: <http://www.myblubell.com/faq.php?page=form1>.



Answers within 48 hours are guaranteed for Gold license holders.

'Join Forum' is a link to the place for **blubell** users, future users and anyone else interested to discuss **blubell**, make proposals, share advice and participate in polls and shape the future of **blubell**.